

Air Conditioning
Technical Data

FTX-KM



- > FTX25KMV1B
- > FTX35KMV1B

TABLE OF CONTENTS

FTX-KM

1	Features	2
2	Specifications	3
	Technical Specifications	3
	Electrical Specifications	4
3	Options	5
4	Centre of gravity	6
5	Piping diagrams	7
6	Sound data	8
	Sound Pressure Spectrum	8

1 Features

Discreet wall mounted unit providing high efficiency and comfort

- Discreet, stylish front panel blends easily with the wall, and matches all interior décors
- Dry programme allows humidity levels to be reduced without variations in room temperature

1



Energy saving during standby mode



Fan only



Auto cooling-heating changeover



Vertical auto swing



Auto fan speed



Fan speed steps



Dry programme



Titanium apatite photocatalytic air purification filter



Infrared remote control

2 Specifications

2-1 Technical Specifications					FTX25KM		FTX35KM	
Power input - 50Hz	Cooling	Nom.	kW	0.020		0.024		
	Heating	Nom.	kW	0.023		0.029		
Casing	Colour			White				
Dimensions	Unit	Height/Width/Depth	mm	285/770/225				
	Packed unit	Height/Width/Depth	mm	305/830/360				
Weight	Unit			kg	8.5	9		
	Packed unit			kg	10.5			
Packing	Weight		kg	2	1.5			
Heat exchanger	Length		mm	610				
	Rows	Quantity		2				
	Fin pitch		mm	1.4				
	Stages	Quantity		18				
	Tube type		ø5 Hi-XB					
	Fin	Type		ML fin (Multi louver)				
Heat exchanger 2	Length		mm	-	600			
	Rows	Quantity		-	1			
	Fin pitch		mm	-	1.4			
	Stages	Quantity		-	4			
Air filter	Type			Removable / washable / mildew proof				
Fan	Type			Cross flow fan				
	Air flow rate	Cooling	High	m ³ /min	10.4	11.8		
				cfm	367	399		
			Medium	m ³ /min	8.0	8.2		
				cfm	283	279		
			Low	m ³ /min	6.1	6.3		
				cfm	215	219		
			Silent operation	m ³ /min	4.8	4.9		
				cfm	170			
			Nom.	cfm	283	279		
				m ³ /min	8.0	8.2		
		Heating	High	m ³ /min	11.1	12.8		
				cfm	392	427		
			Medium	m ³ /min	8.5			
				cfm	300	304		
			Low	m ³ /min	6.7	6.9		
				cfm	237			
		Silent operation	m ³ /min	6.1	6.4			
			cfm	215	226			
		Nom.	cfm	300	304			
m ³ /min			8.5					
Fan motor	Model			MM6K11S20VA				
	Speed	Steps		5 + silent, + auto				
		Cooling	High/Medium/Low/Silent operation	rpm	1,020/820/660/550		1,140/840/680/560	
					1,080/860/710/670		1,220/900/730/690	
	Heating	High/Medium/Low/Silent operation	rpm					
Output	Rated		W	22				
Sound power level	Cooling		dBA	55				
	Heating		dBA	55	56			

2 Specifications

2

2-1 Technical Specifications				FTX25KM	FTX35KM
Sound pressure level	Cooling	High/Medium/ Low/Silent operation	dBA	40/33/26/20	43/34/27/20
	Heating	High/Medium/ Low/Silent operation	dBA	40/34/28/25	43/35/29/26
Control systems	Infrared remote control			ARC470A1	
	Wired remote control			BRC944B2 / BRC073A1	
Piping connections	Liquid	OD		6.35	
	Gas	OD		9.5	
	Drain			18	
	Heat insulation			Both liquid and gas pipes	
Temperature control				Microcomputer control	
Air direction control				Right, Left, Horizontal, Downward	

Standard Accessories : Installation manual; Quantity : 1;

Standard Accessories : Operation manual; Quantity : 1;

Standard Accessories : Infrared remote control; Quantity : 1;

Standard Accessories : AA dry-cell batteries; Quantity : 2;

Standard Accessories : Remote control holder; Quantity : 1;

Standard Accessories : Mounting plate; Quantity : 1;

Standard Accessories : Titanium apatite photocatalytic air purification filter; Quantity : 2;

Standard Accessories : Indoor unit fixing screws; Quantity : 2;

2-2 Electrical Specifications				FTX25KM	FTX35KM
Power supply	Name			V1	
	Phase			1~	
	Frequency		Hz	50	
	Voltage		V	220-240	
Current	Nominal running current (RLA) - 50Hz	Cooling	A	0.20	
		Heating	A	0.22	0.24

3 Options

3 - 1 Options

FTX-KM

Option kit	Product name	Remark	Applicable models			
			Class	Factory	Class	Factory
			50	60	71	DSZ
			60	71	DSZ	DSZ
			FTX20A11B	FTX20A11B	FTX20A11B	FTX20A11B
			FTX20A11B	FTX20A11B	FTX20A11B	FTX20A11B
			FTX20A11B	FTX20A11B	FTX20A11B	FTX20A11B
Wired remote control	BR073A1		✓	✓	✓	✓
Wired remote control	BR044B2		✓	✓	✓	✓
Extension cord for wired remote control (3m)	BR0491A03		✓	✓	✓	✓
Extension cord for wired remote control (5m)	BR04901A08		✓	✓	✓	✓
Interface adaptor for wired remote control	KRP98081		✓	✓	✓	✓
Interface adaptor for wired remote control	EXRP067A41		✓	✓	✓	✓
Interface adaptor for wired remote control	EXRP98082		✓	✓	✓	✓
Centralised control board (up to 5 rooms)	KRC72A		✓	✓	✓	✓
Wiring adaptor (normal open contact - normal open pulse contact)	KRP413AB15		✓	✓	✓	✓
Wi-Fi adaptor for smartphones	BRP069A41	①	✓	✓	✓	✓
Wi-Fi adaptor for smartphones	BRP069A43		✓	✓	✓	✓
Wi-Fi adaptor for smartphones	BRP069A44		✓	✓	✓	✓
Wi-Fi adaptor for smartphones	BRP069A45		✓	✓	✓	✓
Interface adaptor for DII-NE1	KRP928B025		✓	✓	✓	✓
Central remote control	DCS302CA51		✓	✓	✓	✓
Unified ON/OFF controller	DCS301BA51		✓	✓	✓	✓
Schedule timer	DST010BA51		✓	✓	✓	✓
Titanium apatite photocatalytic air-purifying filter without frame	KAF91A42	②	✓	✓	✓	✓
Titanium apatite photocatalytic air-purifying filter without frame	KAF92B42	③	✓	✓	✓	✓
Titanium apatite photocatalytic air-purifying filter with frame	KAF91A46	④	✓	✓	✓	✓
Titanium apatite photocatalytic air-purifying filter without frame	BAF970-A	⑤	✓	✓	✓	✓
Photocatalytic deodorising and air-purifying filter without frame	KAF968A42		✓	✓	✓	✓
Photocatalytic deodorising filter with frame	KA2017B41		✓	✓	✓	✓
Photocatalytic deodorising filter without frame	KA2017B42		✓	✓	✓	✓
Air-purifying filter with frame	KAF925B41		✓	✓	✓	✓
Photocatalytic deodorising and air-purifying filter with frame	KAF046A41		✓	✓	✓	✓
Anti-theft protection for remote control	KRP910A44		✓	✓	✓	✓
Anti-theft protection for remote control	KRP917A44		✓	✓	✓	✓
Anti-theft protection for remote control	KRP936A44		✓	✓	✓	✓
Installation frame for floor-standing units	BK028A4		✓	✓	✓	✓

- Notes
1. R410A models
 2. Editable data for this drawing are available in the GDE (E-BOM) system.

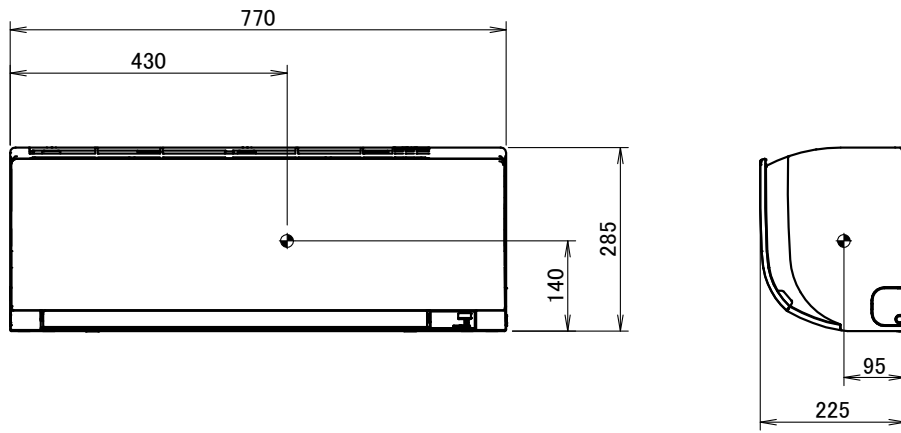
- Legend
- ① Three-dimensional knitted fabric (42x275mm) + activated charcoal net
 - ② Three-dimensional knitted fabric (42x255mm) + activated charcoal net
 - ③ Corrugated fiberboard (42x275mm)
 - ④ Without connection cable
 - ⑤ Three-dimensional knitted fabric (24x115 + 42x255mm) + activated charcoal net

3D095247F

4 Centre of gravity

4 - 1 Centre of Gravity

FTX-KM



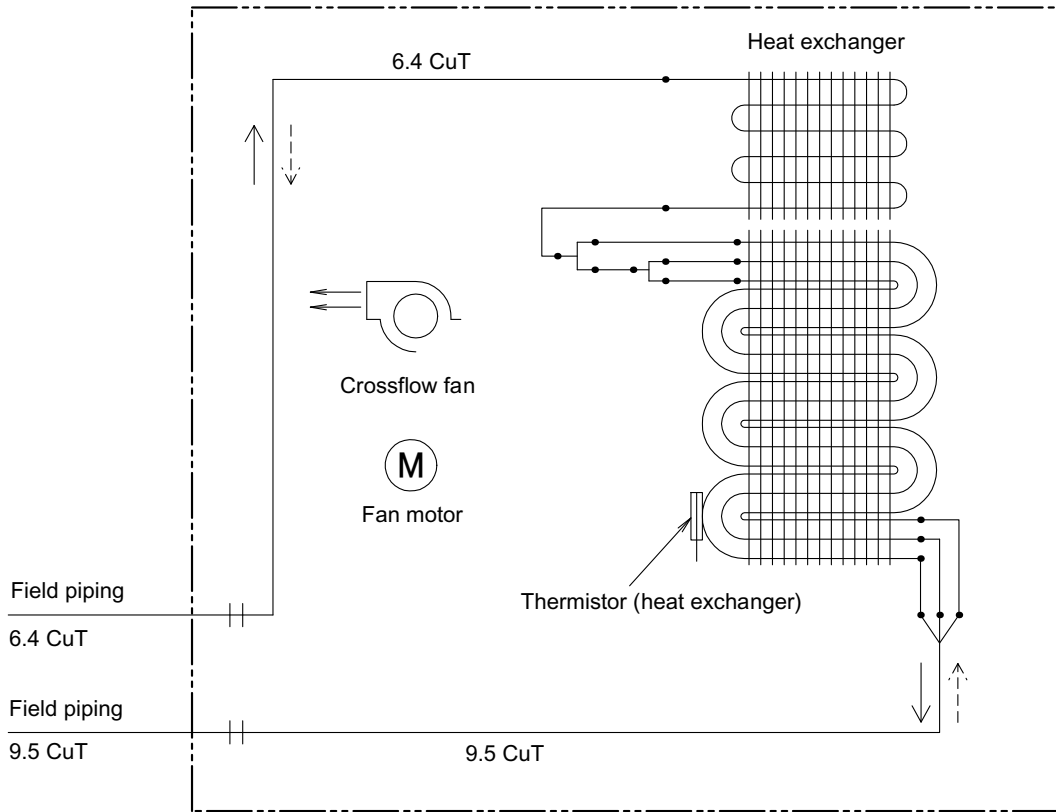
4D094235A

5 Piping diagrams

5 - 1 Piping Diagrams

FTX-KM

Indoor unit



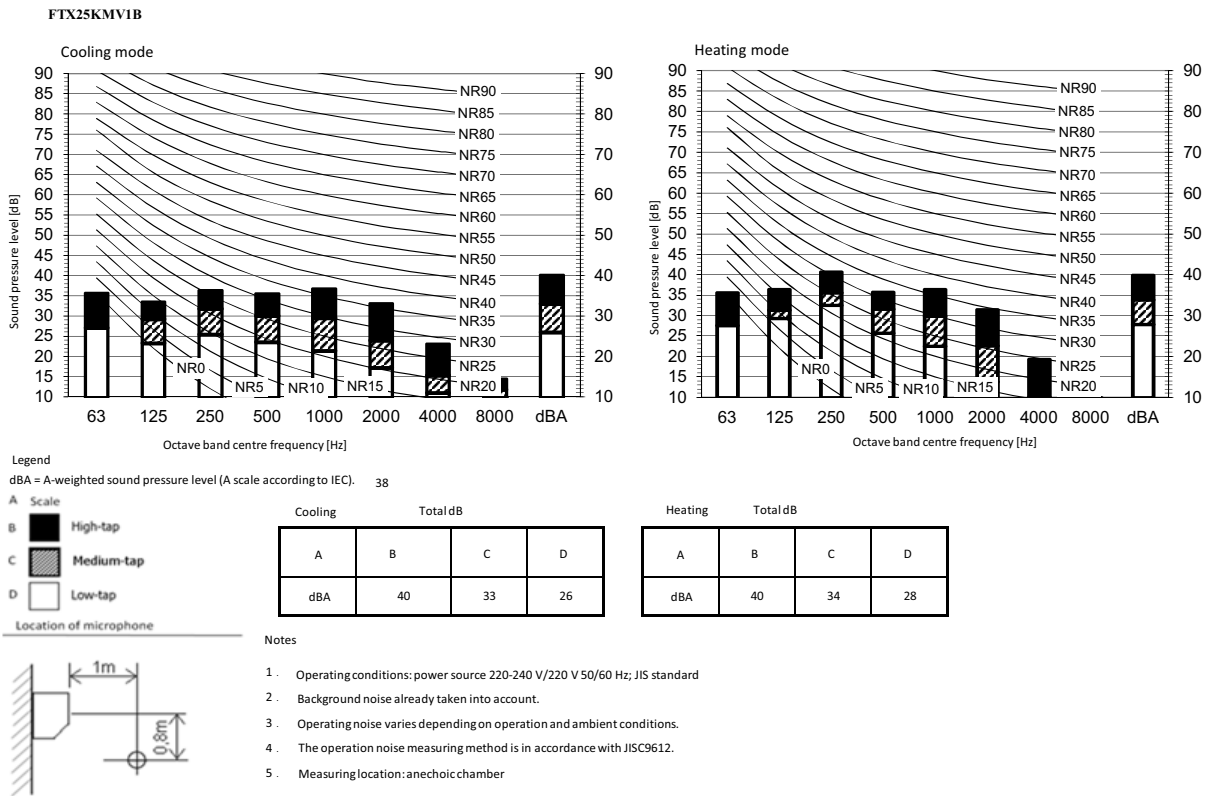
Refrigerant flow
—> Cooling
- - -> Heating

4D094181

6 Sound data

6 - 1 Sound Pressure Spectrum

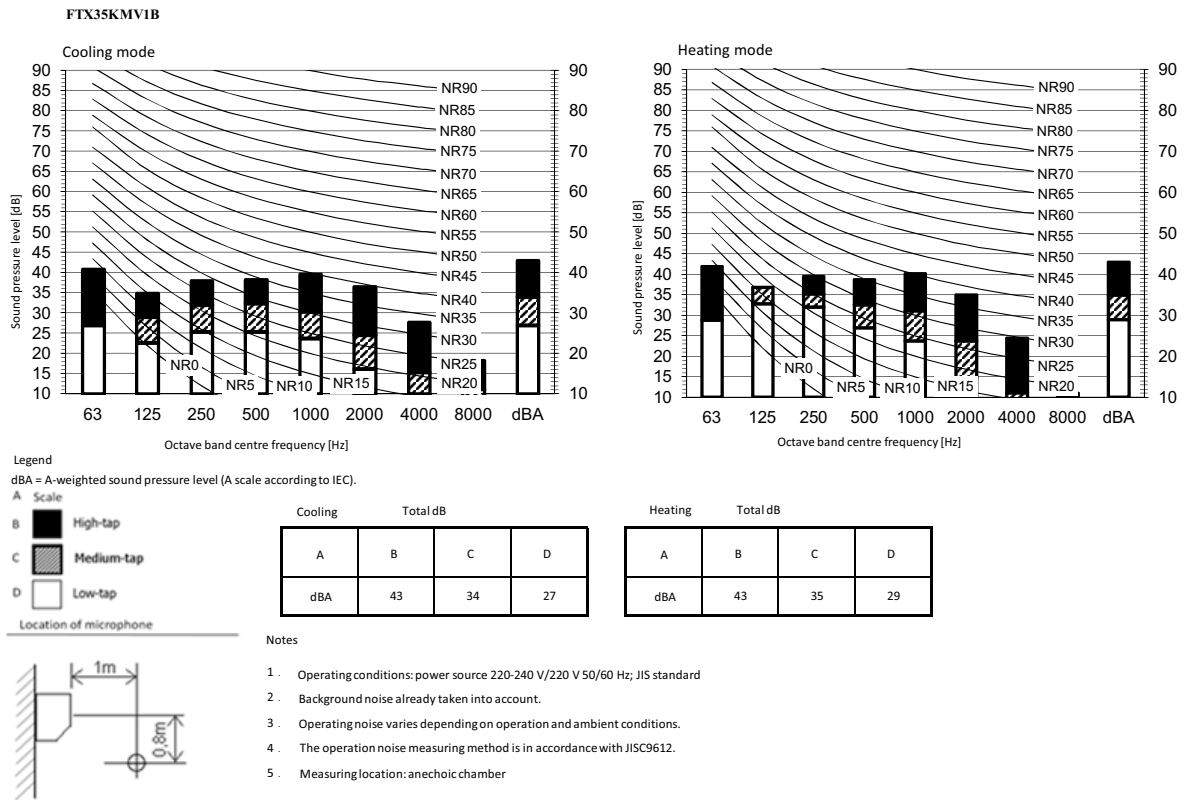
6



3D095157A

6 Sound data

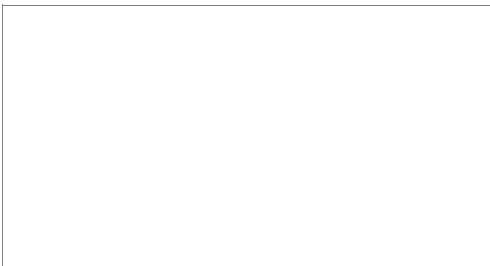
6 - 1 Sound Pressure Spectrum



3D095158A



Daikin Europe N.V. Naamloze Vennootschap - Zandvoordestraat 300, B-8400 Oostende - Belgium - www.daikin.eu - BE 0412 120 336 - RPR Oostende



EEDEN XXX-07/16



Daikin Europe N.V. participates in the Eurovent Certification programme for Liquid Chilling Packages (LCP), Air handling units (AHU), Fan coil units (FCU) and variable refrigerant flow systems (VRF) Check ongoing validity of certificate online: www.eurovent-certification.com or using: www.certiflash.com



The present leaflet is drawn up by way of information only and does not constitute an offer binding upon Daikin Europe N.V.. Daikin Europe N.V. has compiled the content of this leaflet to the best of its knowledge. No express or implied warranty is given for the completeness, accuracy, reliability or fitness for particular purpose of its content and the products and services presented therein. Specifications are subject to change without prior notice. Daikin Europe N.V. explicitly rejects any liability for any direct or indirect damage, in the broadest sense, arising from or related to the use and/or interpretation of this leaflet. All content is copyrighted by Daikin Europe N.V.